

# Regional Coordination Between Subbasins

Antelope | Bowman | Butte | Colusa | Corning | Los Molinos | Red Bluff | Sutter | Vina | Wyandotte Creek | Yolo

## Sustainable Groundwater Management Act

**What is SGMA?** California enacted the Sustainable Groundwater Management Act (SGMA) in 2014 to better manage groundwater over the long term. Sustainability is achieved by avoiding significant and unreasonable conditions for the six "sustainability indicators."



Lowering of Groundwater Levels



Reduction of Groundwater Storage



Land Subsidence



Surface Water Depletion



Water Quality Degradation



Sea Water Intrusion

**Why is regional coordination important?** In the Sacramento Valley, inter-basin coordination is critical as Groundwater Sustainability Agencies (GSA) develop their Groundwater Sustainability Plans (GSP). Since groundwater subbasins in the Northern Sacramento Valley (NSV) are hydrologically interconnected, water management decisions and actions in one subbasin (e.g. groundwater pumping) and processes like climate change could change aquifer conditions and affect flows to other subbasins. Understanding and accounting for these processes is key to achieve sustainability in all subbasins.

## Who is involved in ongoing efforts?

Collaborative efforts have begun among representatives from 11 subbasins (Antelope, Bowman, Butte, Colusa, Corning, Los Molinos, Red Bluff, Sutter, Vina, Wyandotte Creek, Yolo), with facilitation support from the Consensus Building Institute. While efforts have focused on the subbasins mentioned, coordination will occur, as warranted, with other neighboring subbasins (Anderson and North Yuba).

## What are the coordination priorities?

Groundwater Sustainability Agencies are working together to establish a foundation for open and transparent inter-basin coordination and communication by developing tools to:



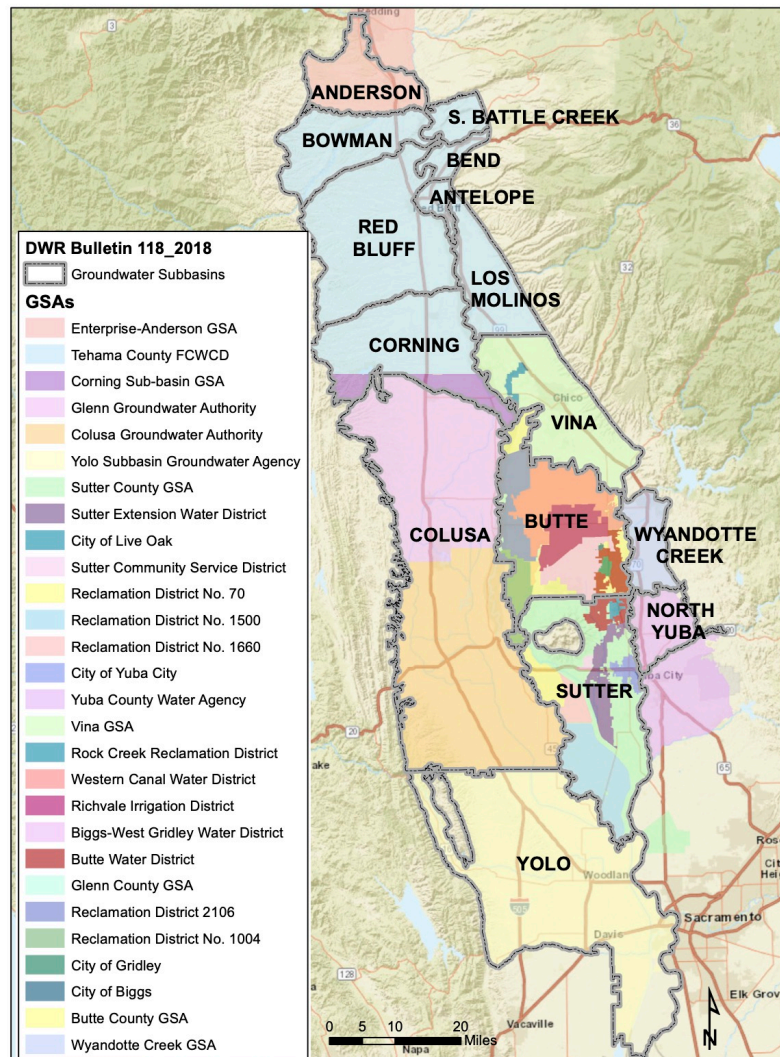
SHARE & COMPILE INFORMATION IN A CONSISTENT WAY



OUTLINE A PROCESS TO IDENTIFY & RESOLVE ISSUES



DOCUMENT COORDINATION EFFORTS



## Learn More & Get Involved



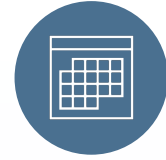
### Receive Updates

Sign up for your GSA's interested parties list.



### Contact Your GSA

Talk to your GSA representative



### Attend Meetings

Attend public workshops, Advisory Board, and GSA Board meetings

Subbasin	GSA(s)	Website
Antelope	Tehama County Flood Control and Water Conservation District (FCWCD)	<a href="#">Website</a>
Bowman	Tehama County FCWCD	<a href="#">Website</a>
Butte	Biggs West Gridley WD, Butte County, Butte WD, City of Biggs, City of Gridley, Colusa Groundwater Authority, Glenn County, RD 1004, RD 2106, Richvale ID, Western Canal WD	<a href="#">Website</a>
Los Molinos	Tehama County FCWCD	<a href="#">Website</a>
Red Bluff	Tehama County FCWCD	<a href="#">Website</a>
Corning	Corning Sub-basin GSA, Tehama County FCWCD	<a href="#">Website</a>
Colusa	Glenn Groundwater Authority; Colusa Groundwater Authority	Websites <a href="#">(Glenn)</a>   <a href="#">(Colusa)</a>
Sutter	Butte WD, City of Live Oak, Sutter Community Service District, Sutter County, Sutter Extension Water District, RD 70, RD 1660, RD 1500, City of Yuba City	<a href="#">Website</a>
Vina	Rock Creek Reclamation District, Vina GSA	Websites <a href="#">(Vina)</a>   <a href="#">(RCDC)</a>
Wyandotte Creek	Wyandotte Creek GSA	<a href="#">Website</a>
Yolo	Yolo Subbasin Groundwater Agency	<a href="#">Website</a>



Find more information about regional inter-basin coordination at:

[ButteCounty.net/waterresourceconservation/Sustainable-Groundwater-Management-Act/Inter-basin-Coordination](https://ButteCounty.net/waterresourceconservation/Sustainable-Groundwater-Management-Act/Inter-basin-Coordination)